

TNP-Q6232EPT3-Z

2 MP 23x Network PTZ Explosion Proof Dome Camera



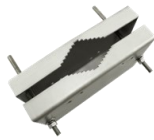
Key Features

- 2 MP (1920 x 1080) resolution, 23x optical zoom
- H.265, H.264, MJPEG codec support
- Multiple streaming, WiseStreamII support
- Day & Night (ICR), WDR (120dB)
- DIS with Built-in Gyro sensor
- SD Memory slot (Maximum 256GB)
- Hazardous Rated for Class I II III Division 1 Groups B, C, D, E, F, G cFMus Approved and II 2 G Ex db IIB+H2 II 2 D Ex tb IIIC IECEX ATEX certified
- Patented design which includes a uniform constructed enclosure consisting of an integrated termination box manufactured directly into the camera housing
- Anodized aluminum housing

Accessories (Optional)



HT-SD-WM Wall Mount (Required)



HT-SPMA-SD Pole Mount Adapter



HT-SD-CM Corner Mount Adapter



HT-SD-FP Fall Protection Lanyard Kit



CERT NO. FM17US0156X & FM18CA0103X

Class I Division 1 Groups B,C,D T6, Ta = -20°C to +55°C Type 4X, IP66
 Class II/III, Division 1, Groups E,F,G T6 Type 4X, IP66/67 Ta = -20°C to +55°C
 Class I, Zone 1, AEx/Ex db IIB+H2 T6 Gb Ta = -20°C to +55°C, Type 4X, IP66
 Zone 21, AEx/Ex tb IIIC T85°C Db Ta = -20°C to +55°C, Type 4X, IP66
 CERT NO. FM18ATEX0057X & IECEX FMG 18.0020X
 II 2 G Ex db IIB+H2 T6 Gb Ta = -20°C to +55°C, IP66
 II 2 D Ex tb IIIC T85°C Db Ta = -20°C to +55°C, IP66

TNP-Q6232EPT3-Z

VIDEO	Imaging Device: 1/2.8" 2.4 MP CMOS Total / Effective Pixels: 1,981(H) x 1,288(V), 2.55 MP / 1,944(H) x 1,212(V), 2.35 MP Scanning System: Progressive Minimum Illumination: Color : 0.2 Lux (F1.6), B/W : 0.01 Lux (F1.6) S / N Ratio: 50dB
LENS	Focal Length (Zoom Ratio): 4.44 ~ 102.2mm (Optical 23x) Maximum Aperture Ratio: F1.6 (Wide) / F3.6 (Tele) Angular Field of View: H : 61.8° (Wide) ~ 3.08° (Tele) / V : 36.2° (Wide) ~ 1.73° (Tele) Minimum Object Distance: Wide : 1.5m (4.92ft), Tele : 2m (6.56ft) Focus Control: Auto / Manual / One shot AF Lens / Mount Type: DC Auto Iris / Board-in type
PAN / TILT / ROTATE	Pan / Tilt Range: 360° Endless / 210° (-15° ~ 195°) Pan / Tilt Speed: Preset : 500°/sec, Manual : 0.024°/sec ~ 200°/sec Sequence: Preset (300ea), Swing, Group (6ea), Trace, Tour (1ea), Auto run, Schedule Preset Accuracy / Azimuth: ±0.2° / Yes (E / W / S / N / NE / NW / SE / SW)
OPERATIONAL	Camera Title: Off / On (Displayed up to 85 characters) - English / Numeric / International characters / Special characters - Common : Multi-line (Max. 5), Color (Gray / Green / Red / Blue / Black / White), Transparency, Auto scale by resolution Day & Night: Auto (ICR) / Color / B/W / Schedule Backlight Compensation: Off / BLC / HLC / WDR Wide Dynamic Range: 120dB Contrast Enhancement: SDR (Off / On) Digital Noise Reduction: SSNRV (2D + 3D Noise filter) (Off / On) Digital Image Stabilization: Off / On (Built-in Gyro sensor) Defog: Off / Auto / Manual Motion Detection: Off / On (8ea, Polygonal) Privacy Masking: Off / On (24 rectangular zones) - Color : Gray / Green / Red / Blue / Black / White / Mosaic - Zoom ratio option for mask mode Gain Control: Off / Low / Middle / High White Balance: ATW / AWC / Manual / Indoor / Outdoor (including mercury & Sodium) Electronic Shutter Speed: Minimum / Maximum / Anti flicker (1 ~ 1/12,000sec) Digital Zoom: 32x Flip / Mirror: Off / On Intelligent video analytics: Tampering detection, Motion detection Input 4ea / Output 2ea (Relay) RS-485- Samsung-T, Pelco-D/P, Panasonic, Bosch, AD, GE, Vicon, Honeywell Alarm Triggers: Motion detection, Tampering detection, Network disconnect Alarm Events: File upload Via FTP and E-mail, Notification Via E-mail, TCP and HTTP, Local storage (SD/SDHC/SDXC) or NAS recording at alarm triggers, Preset Pixel counter: Support NETWORK Ethernet: RJ-45 (10/100 BASE-T) Video Compression Format: H.265 / H.264 (MPEG-4 part 10/AVC), MJPEG Resolution: 1920 x 1080, 1280 x 1024, 1280 x 960, 1280 x 720, 1024 x 768, 800 x 600, 800 x 448, 720 x 576, 720 x 480, 640 x 480, 640 x 360, 320 x 240 Maximum Framerate: H.265 / H.264 : 30fps at all resolutions, MJPEG : 30fps at all resolutions Smart Codec: Manual mode (Area-based : 5ea) WiseStreamII: Support Video Quality Adjustment: H.265 / H.264 / MJPEG : Target bitrate level control Bitrate Control Method: H.265 / H.264 : CBR or VBR, MJPEG : VBR Streaming Capability: Multiple streaming (Up to 10 profiles) IP: IPv4, IPv6 Protocol: TCP/IP, UDP/IP, RTP(UDP), RTP(TCP), RTSP, NTP, HTTP, HTTPS, SSL/TLS, DHCP, PPPoE, FTP, SMTP, ICMP, IGMP, SNMPv1/v2c/v3(MIB-2), ARP, DNS, DDNS, QoS, UPnP, Bonjour Security: HTTPS(SSL) login authentication, Digest login authentication IP address filtering, User access log, 802.1x authentication (EAP-TLS, EAP-LEAP) Streaming Method: Unicast / Multicast Maximum User Access: 20 users at Unicast mode Edge Storage: Micro SD/SDHC/SDXC 2 slots (up to 512 GB) - Continuous recording (1st slot to 2nd slot) Motion images recorded in the SD/SDHC/SDXC memory card can be downloaded. NAS (Network Attached Storage), Local PC for instant recording Application Programming Interface: ONVIF Profile S/G, SUNAPI 2.0 (HTTP API), Wisenet open platform English, Korean, Chinese, French, Italian, Spanish, German, Japanese, Russian, Swedish, Portuguese, Czech, Polish, Turkish, Dutch, Hungarian, Greek Webpage Language: Supported OS : Windows 7, 8.1, 10, Mac OS X 10.10, 10.11, 10.12 Plug-in Free Webviewer Web Viewer: - Supported Browser : Google Chrome, MS Edge, Mozilla Firefox (Window 64bit only), MS Explorer 11, Apple Safari 10 (Mac OS X only) Central Management Software: Wisenet WAVE, SmartViewer, SSM
ENVIRONMENTAL	Operating Temperature / Humidity: -20°C ~ +55°C (-4°F ~ +131°F) / Less than 90% RH Storage Temperature / Humidity: -30°C ~ +60°C (-22°F ~ +140°F) / Less than 90% RH Ingress Protection: Type 4x / IP66 ELECTRICAL Input Voltage / Current: PoE+ (IEEE802.3at, Class4) Power Consumption: Maximum 24W MECHANICAL Color / Material: RAL2000-Yellow Orange / Anodized Aluminum Dimensions (WxH): Ø8.6" x 15.82" Weight: 28 lb (12.7Kg)

* The latest product information / specification can be found at hanwhasecurity.com

* Design and specifications are subject to change without notice.

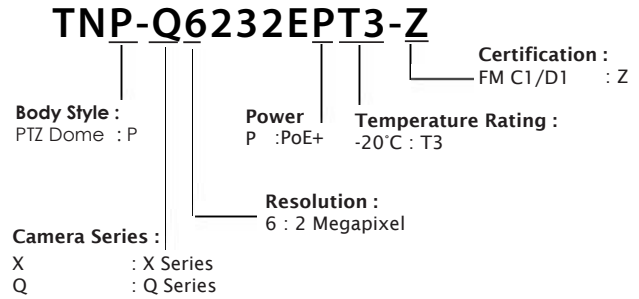
* Wisenet is the proprietary brand of Hanwha Techwin, formerly known as Samsung Techwin.

TNP-Q6232EPT3-Z

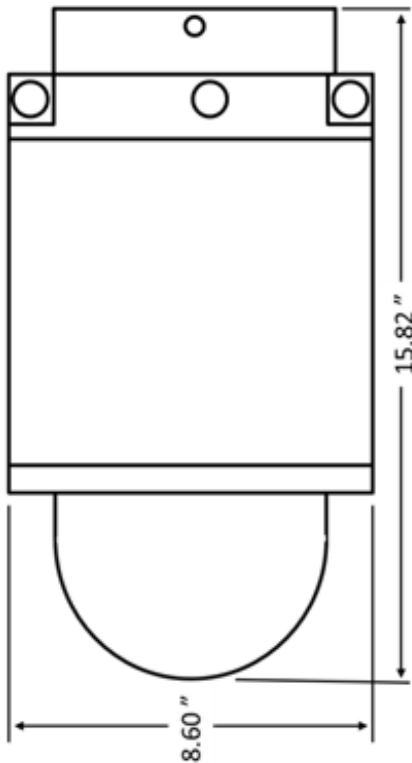
2 MP 32x Network PTZ Explosion Proof Dome Camera



Model Number:



Dimensions



CERT NO. FM17US0156X & FM18CA0103X
 Class I Division 1 Groups B,C,D T6, Ta = -20°C to +55°C Type 4X, IP66
 Class II/III, Division 1, Groups E,F,G T6 Type 4X, IP66/67 Ta = -20°C to +55°C
 Class I, Zone 1, AEx/Ex db IIB+H2 T6 Gb Ta = -20°C to +55°C, Type 4X, IP66
 Zone 21, AEx/Ex tb IIIC T85°C Db Ta = -20°C to +55°C, Type 4X, IP66
 CERT NO. FM18ATEX0057X & IECEx FMG 18.0020X
 II 2 G Ex db IIB+H2 T6 Gb Ta = -20°C to +55°C, IP66
 II 2 D Ex tb IIIC T85°C Db Ta = -20°C to +55°C, IP66